

Short Report



UNESCO World Heritage Site Völklinger Hütte | Guenther Bayerl

UNESCO World Heritage Site Völklinger Hütte

Rathausstraße 75–79
66333 Völklingen

Tel: +49 6898 – 9 100 100

visit@voelklinger-huette.org
<https://voelklinger-huette.org>

Welcome!

UNESCO World Heritage Site Völklinger Hütte

The UNESCO World Heritage Site Völklinger Hütte is the only completely preserved ironworks from the heyday of industrialisation.

Several kilometres of visitor paths lead to milestones in the history of technology such as the unique inclined ore lift, the huge blowing machines and the sintering plant.

The history of high industrialisation can be experienced here with all the senses.

Today, the Völklinger Hütte is a unique venue for international exhibitions, festivals and concerts.

On part of the former coking plant, plants and animals have reclaimed the site. As a result, the World Heritage Site is now also a place of nature.

Accessible tourism in Germany more information: www.barrierefreies.saarland

TEST RESULT

for

UNESCO–Weltkulturerbe Völklinger Hütte

66333 Völklingen, Certificate-ID: PA-13017-2025



This offer was classified according to the criteria of the nationwide label

»Tourism for All«

and, in the period from

July 2025 – June 2028

is entitled to use the label

»Accessibility checked«

and the associated pictograms

in accordance with the contract.



UNESCO World Heritage Site Völklinger Hütte

UNESCO Weltkulturerbe
Völklinger Hütte



UNESCO World Heritage Site Völklinger Hütte

UNESCO Weltkulturerbe
Völklinger Hütte



UNESCO World Heritage Site Völklinger Hütte

Erik Hoffmann / TZS



UNESCO World Heritage Site Völklinger Hütte

UNESCO Weltkulturerbe
Völklinger Hütte

Overview

These are the themes of the World Cultural Heritage Site Völklinger Hütte:

- Industry
- History
- Art
- Culture
- Nature

Accessibility at a glance

Accessibility at a glance

- Most areas are easily accessible via ramps and lifts (exception: viewing platform at a height of 45 m).
- A limited number of wheelchairs and rollators are available for hire at the ticket desk.
- Accompaniment service for people with disabilities: advance booking required with Visitor Services.
- Hearing-accessible reception area with loop system
- Guided tours with FM systems that can be used with neck loops or headphones. Please contact us.
- Media guides for the special exhibition can be used with neckloops.
- Guided tours in German Sign Language and International Sign.

Information for people with walking difficulties and wheelchair users

All areas relevant for testing meet the quality criteria of the label "**Accessibility certified – partially accessible for people with walking disabilities and wheelchair users**".

Some **information on accessibility** are listed below. For detailed information please see the evaluation report.

- There are three parking spaces for people with disabilities.
- All rooms and facilities that can be used by guests are accessible without steps/at ground level or via a ramp or elevator.
- There are no inclines of more than 12%.
- All doors/passages and paths that can be used by guests and are raised are at least 80 cm wide.
- Exhibits and information are mainly visible from a seated position.
- Seating is available.
- There are no wheelchair-compatible tables in the bistro.
- There are public toilets for people with disabilities throughout the site, which can be accessed from at least one side (at least 80 cm).
- There is usually a folding grab rail at least on the accessible side of the toilet. WCs are equipped with a recliner.
- Guided tours are offered for people with walking disabilities and wheelchair users. Advance booking is required.
- Mobile or fixed seating is available for people with walking disabilities, which can be used during the tour.

Information for people with hearing impairments and deaf people

All areas relevant for testing meet the quality criteria of the label "**Accessibility certified – partially accessible for people with hearing impairment and for deaf people**".

Some **information on accessibility** are listed below. For detailed information please see the evaluation report.

- There is no inductive hearing system available.
- Information is provided in writing.
- Wi-Fi is available.
- A multimedia guide in sign language is available.

- An outgoing emergency call is confirmed visually in the elevator.
- Information about the exhibits is partly provided in writing, in photorealistic representations or acoustically.
- There are technical options for conveying information to deaf people.
- Guided tours are offered for people with hearing impairments and deaf people (in German sign language). Advance booking is necessary.
- Guided tours with FM systems are available for people with hearing impairments (e.g. headphones, neckloops).

Information for visually impaired and blind people

Some **information on accessibility** are listed below. For detailed information please see the evaluation report.

- Assistance dogs are welcome.
- The signage (for orientation) is designed in easily legible and high-contrast lettering.
- All elevated areas that can be used by guests are brightly lit and glare-free. Some exhibits are not generally well lit.
- An outgoing emergency call in the elevator is confirmed acoustically.
- Steps do not have high-contrast edges.
- Stairs have at least one handrail on one side.
- Information about the exhibits is visually rich in contrast.
- Information about the exhibits is partly conveyed acoustically.
- Seating is available.
- A multimedia guide is available.
- Information is not available in Braille or prismatic writing.
- On request, an individual escort and guide service is available for people with visual impairments and blind people.

Information for guests with cognitive impairments

All areas relevant for testing meet the quality criteria of the label "**Accessibility certified – accessible for with cognitive impairments**".

Some **information on accessibility** are listed below. For detailed information please see the evaluation report.

- The name of the Völklingen Ironworks is clearly recognizable from the outside.
- The ticket office is directly visible from the entrance.
- Information is provided in plain language.
- There is a multimedia guide in easy language.
- The destinations of the paths are within sight or there are signs at a constantly visible distance.
- Information for orientation is presented in pictorial form.
- Guided tours are offered for people with cognitive impairments. Advance booking is required.
- The guided tour for people with cognitive impairments is given in plain language.
- The contents (e.g. exhibits) of the guided tour for people with cognitive impairments are easy to understand or are explained in an easy-to-understand way (e.g. pictorially).

Image Gallery

We have put together some photos from the company / offer for you. You can find more photos in the detailed reports.



Parking lot

©Julia Marmulla



Parking lot

©Julia Marmulla



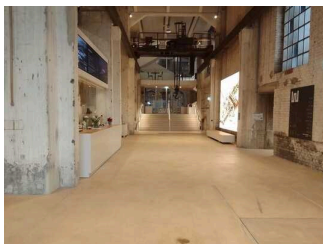
Elevated water tank (W) – main entrance to the entire complex

©Julia Marmulla



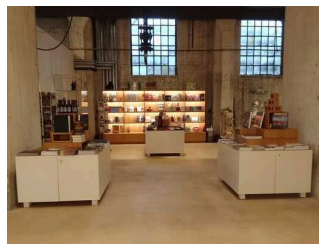
Elevated water tank (W) – main entrance to the entire complex

©Julia Marmulla



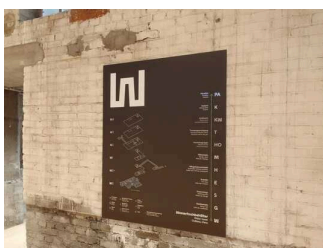
Elevated water tank (W) – cash desk and store

©Julia Marmulla



Elevated water tank (W) – cash desk and store

©Julia Marmulla



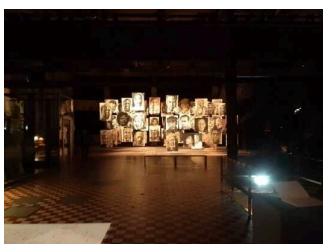
Elevated water tank (W) – cash desk and store

©Julia Marmulla



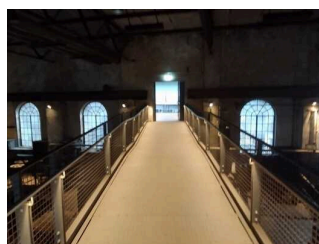
Blower hall (G) – special exhibition area

©Julia Marmulla



Blower hall (G) – special exhibition area

©Julia Marmulla



Gebläsehalle (G) – Industrial culture, event area

©Julia Marmulla



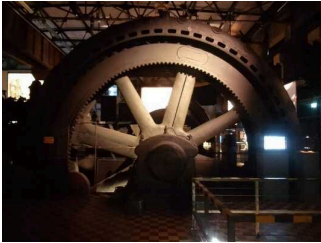
Gebläsehalle (G) – Industrial culture, event area

©Carl Veith



Gebläsehalle (G) – Industrial culture, event area

©Hans Georg Merkel



Gebläsehalle (G) – Industrial culture, event area

©Julia Marmulla



Gebläsehalle (G) – Industrial culture, event area

©Julia Marmulla



Gebläsehalle (G) – Industrial culture, event area

©Julia Marmulla



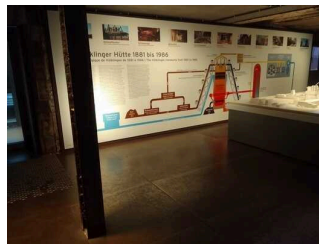
Sintering plant (S)

©Julia Marmulla



Sintering plant (S)

©Julia Marmulla



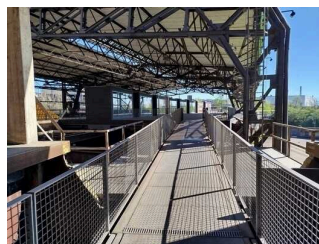
Sintering plant (S)

©Julia Marmulla



Sintering plant (S)

©Julia Marmulla



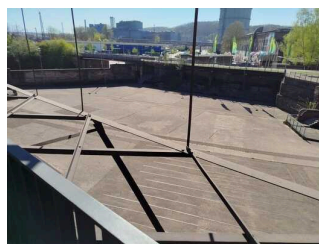
Ore hall and square (E) – Viewpoint

©Julia Marmulla



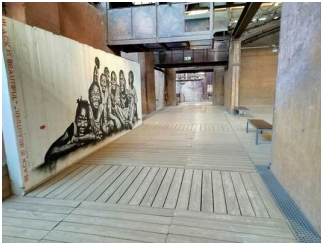
Ore hall and square (E) – Viewpoint

©Julia Marmulla



Ore hall and square (E) – Viewpoint

©Julia Marmulla



Möllerhalle (M)

©Julia Marmulla



Möllerhalle (M)

©Julia Marmulla



Möllerhalle (M)

©Julia Marmulla



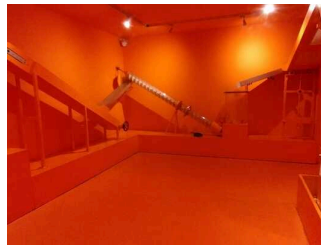
Ferrodrom in the Möllerhalle (M) – Participation station

©Julia Marmulla



Ferrodrom in the Möllerhalle (M) – Participation station

©Julia Marmulla



Ferrodrom in the Möllerhalle (M) – Participation station

©Julia Marmulla



Ferrodrom in the Möllerhalle (M) – Participation station

©Julia Marmulla



Blast furnace group (HO) – Industrial culture

©Julia Marmulla



Blast furnace group (HO) – Industrial culture

©Julia Marmulla



Blast furnace group (HO) – Industrial culture

©Julia Marmulla



Blast furnace group (HO) – Industrial culture

©Julia Marmulla



Blast Furnace Square (HOP) – Exterior

©Julia Marmulla



Coking plant (K) and Paradise (PA) – outdoor area

©Julia Marmulla



Coking plant (K) and Paradise (PA) – outdoor area

©Julia Marmulla



Coking plant (K) and Paradise (PA) – outdoor area

©Julia Marmulla



Coking plant (K) and Paradise (PA) – outdoor area

©Julia Marmulla



Coking plant (K) and Paradise (PA) – outdoor area

©Julia Marmulla



Coking plant (K) and Paradise (PA) – outdoor area

©Julia Marmulla



Elevated water tank (W) – Exhibition

©Julia Marmulla



Elevated water tank (W) – Exhibition

©Julia Marmulla



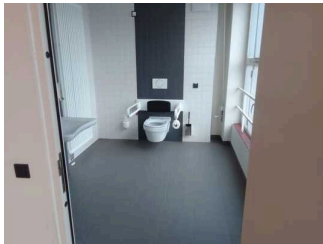
Elevated water tank (W) – Exhibition

©Julia Marmulla



Info Stelen

©Julia Marmulla



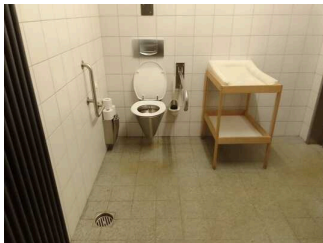
Elevated water tank (W) – WC for people with disabilities

©Julia Marmulla



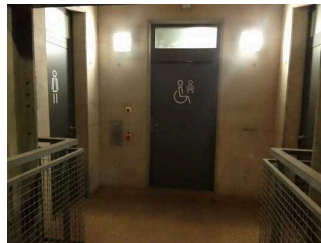
Elevated water tank (W) – WC for people with disabilities

©Julia Marmulla



Blower hall (G) – WC for people with disabilities

©Julia Marmulla



Sintering plant (S) – WC for people with disabilities

©Julia Marmulla

Information on the "Tourism for All" labeling system

All establishments and locations certified with the label "Tourism for All" meet the following quality criteria:

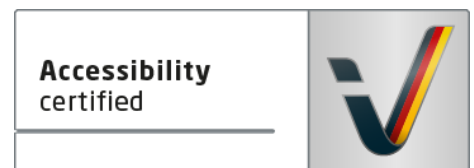
- Data and information on accessibility are collected and checked on site by **external, specially trained evaluators**. The method is not based on self-assessments.
- Data on accessibility is available **in detail** and can be viewed by the guests.
- At least one staff member has successfully passed a **training** on "**Accessibility as a comfort and quality feature**".

The labeling – explanation of the logos and pictograms

The label "**Information about Accessibility**" indicates that detailed and verified information on accessibility is available for all groups of people.



The label "**Accessibility certified**" is based on "Information about Accessibility". It means that the quality criteria defined for specific groups of people are met partially or completely.



The label "**Accessibility certified**" is available in two requirement levels:

"Accessibility certified: partially accessible".

The quality criteria are partially fulfilled for the pictured group of people, i.e. the establishment/location is partially accessible for wheelchair users. The "i" in the pictogram indicates that it is recommended to read again carefully whether the offer meets all (your oder the guest's) individual requirements.



"Accessibility certified: accessible".

The quality criteria are fulfilled for the pictured group of people, i.e. the establishment/location is accessible for wheelchair users.



There are defined quality criteria for **seven groups of people** and a **specific pictogram** for each group.

People with walking disabilities



Wheelchair users



People with hearing impairment



Deaf people



People with visual impairments



Blind people



People with cognitive impairments

